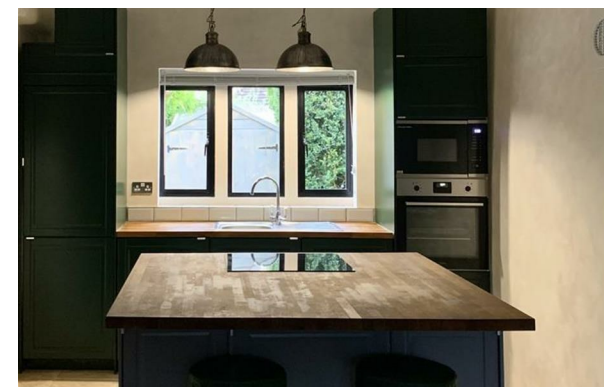




THE COTSWOLD LETTING AGENCY
BETTER BY FAR



No.6 Manor House Eastleach, Eastleach, GL7 3NQ

£2,995 Per Month

- Available furnished or unfurnished
- Long let
- Attached two-storey house
- Private courtyard
- 3 bedrooms
- Village location



Energy Efficiency Rating		
	Current	Potential
Very energy efficient - lower running costs		
(92 plus) A		
(81-91) B		
(69-80) C		
(55-68) D		61
(39-54) E	44	
(21-38) F		
(1-20) G		
Not energy efficient - higher running costs		
England & Wales	EU Directive 2002/91/EC	